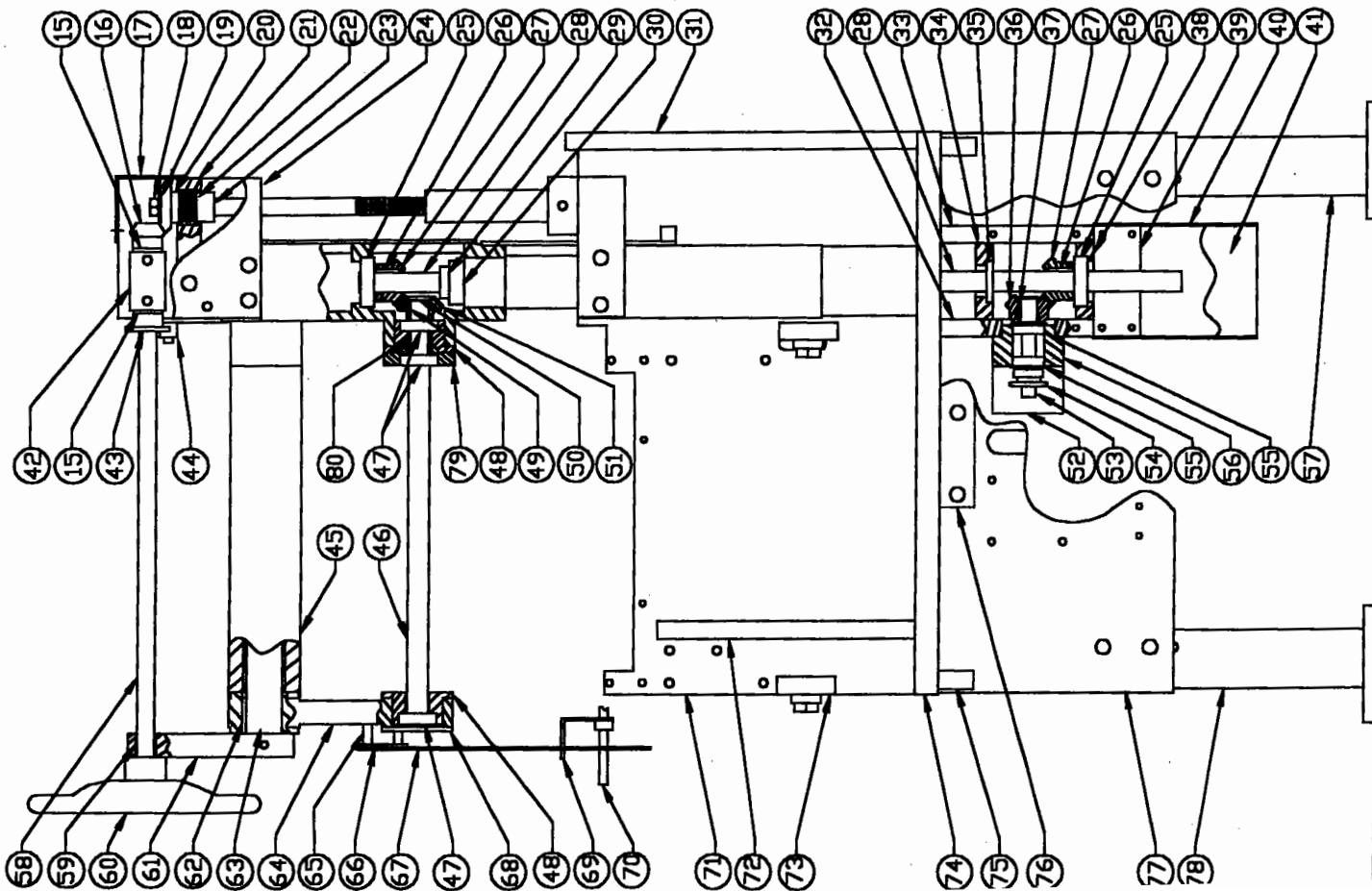


DWG. NO. NAL-A19SRC/BOOSTER
 MODEL A5RC
 L.H. CONTROL LABELER
 FEED END COLUMN SUPPORT
 WITH BOOSTER DRIVE ASSY.



MODEL A5RC L.H. CONTROL LABELER FEED END COLUMN SUPPORT
WITH BOOSTER DRIVE ASSEMBLY
DWG. NO. NAL-A19SRC/BOOSTER

AUGUST 15, 2002

ITEM NO.	PART NO.	DESCRIPTION
1	NAL-546S	DIAMETER ADJUSTMENT CHAIN
2	NA-W536D	CHAIN TAKE-UP BRACKET WELDMENT
3	NAL-517	DIAMETER ADJUSTING SCREW
4	NAL-1999RC	HEIGHT ADJUST SHAFT SUPPORT
5	NLE-56	COLUMN COVER PLATE
6	NAL-A52D	CARRIER FRAME SUPPORT ASSEMBLY
7	NLE-518R	DIAMETER ADJUST SCREW SLEEVE-R.H.
8	NLE-565	BRONZE BUSHING
9	NAL-1901	DIAMETER SCREW SLEEVE MOUNT
10	NAL-1902	DIAMETER SCREW SLEEVE SUPPORT
11	NAL-1908	DIAMETER ADJUST STOP PLATE
12	NAL-1909	DIAMETER ADJUST STOP BLOCK
13	NAL-110	SUPPORT TUBE
14	NAL-1991S	FEED END TUBE SUPPORT
15	NMC-149	FLANGE BUSHING
16	NLE-522	DIAMETER ADJUST BEVEL PINION
17	NAL-1906	DIAMETER ADJUST GEAR COVER
18	FP-HN08F	PLATED HEX NUT
19	NLE-453	HEIGHT ADJUST STUD WASHER
20	NLE-521	DIAMETER ADJUST BEVEL GEAR
21	NAL-1904	THRUST ADJUST NUT MOUNT
22	NLE-519	THRUST ADJUST NUT
23	NAL-1905	DIAMETER ADJUST SCREW FILLER
24	NAL-1903	DIAMETER ADJUST GEAR SUPPORT
25	NAL-BS11RF	BEARING
26	NLE-5302	COLUMN DRIVE TUBE KEY
27	NAL-591	DRIVE MITER GEAR
28	NAL-515	DRIVE TUBE
29	NAL-520	TUBING THRUST COLLAR
30	NL-B608	THRUST BEARING
31	NAL-10AS	REAR SIDE PLATE
32	NAL-2961	DRIVE HOUSING SIDE PLATE
33	NAL-2962	DRIVE HOUSING SIDE PLATE
34	NAL-2964	DRIVE HOUSING TOP PLATE
35	NLE-OS221	OIL SEAL
36	NLE-592	DRIVE MITER GEAR
37	F-WK09	WOODRUFF KEY
38	NAL-2963	DRIVE HOUSING BOTTOM PLATE
39	NAL-2966	DRIVE HOUSING FRONT COVER
40	NAL-2967	DRIVE TUBE COVER
41	NAL-2965	DRIVE HOUSING BACK COVER
42	NAL-530	DIAMETER ADJUST BEARING SUPPORT
43	NLE-535	DIAMETER ADJUST SPROCKET
44	NLE-454	HEIGHT ADJUST TAKE-UP ROLLER
45	NAL-561	SUPPORT SHIELD

WHEN ORDERING REPAIR PARTS, GIVE MODEL NO., MACHINE NO. & SERIAL NO.
AS WELL AS PART NUMBER AND NAME.

NEW WAY PACKAGING MACHINERY, INC.
P.O. BOX 467 210 BLETTNER AVENUE
HANOVER, PA. 17331
TEL. (717) 637-2133 OR 637-8998
FAX. (717) 637-2966 WEB SITE: www.labeler.com

MODEL ASRC L.H. CONTROL LABELER FEED END COLUMN SUPPORT
WITH BOOSTER DRIVE ASSEMBLY
DWG. NO. NAL-A19SRC/BOOSTER

AUGUST 13, 2002

ITEM NO.	PART NO.	DESCRIPTION
46	NAL-557DRC	COUNTER DRIVE SHAFT
47	NLE-BS8F	BEARING
48	NLEB-46	BOOSTER DRIVE CAP
49	NLE-566	COUNTER DRIVE SHAFT KEY
50	NAL-5341R	DRIVE SHAFT SCREW-R.H.
51	NLE-596	DRIVE GEAR
52	NAL-2970	DRIVE CHAIN GUARD
53	NAL-2969	BOOSTER DRIVE GEAR STUD
54	NLE-610	DRIVE SPROCKET
55	NLEB-30	BEARING
56	NAL-2968	DRIVE GEAR BEARING BLOCK
57	NAL-W1953LL	LEG EXTENSION WELDMENT
58	NAL-523	DIAMETER ADJUST DRIVE SHAFT
59	NLE-2251	BRONZE BUSHING
60	NLE-524	ADJUST HANDWHEEL
61	NAL-1907	DIAMETER ADJUST SHAFT SUPPORT
62	NLE-5303	OVERHEAD CARRIER ARM KEY
63	NLE-560HD	OVERHEAD CARRIER BAR - HD
64	NLE-559F	OVERHEAD CARRIER ARM - F.E.
65	NLE-418B	FILLER
66	NLE-564	DIAMETER GAUGE MOUNTING BLOCK
67	NLE-A562	DIAMETER GAUGE
68	NLE-5334	CARRIER ARM CAP - FEED END
69	NLE-W563	DIAMETER GAUGE BRACKET WELDMENT
70	NLE-193/1	CAN TRACK SUPPORT ROD - F.E.
71	NAL-16S	FEED END PLATE
72	NAL-1993S	FEED END PLATE BRACE
73	NAL-1931	GUM POT RACK SUPPORT
74	NAL-10S	MAIN FRAME PLATE
75	NAL-1952	LEG MOUNT BLOCK
76	NAL-1951	LEG MOUNT BLOCK
77	NAL-1950F	LEG - FEED END
78	NAL-W1953LR	LEG EXTENSION WELDMENT
79	NAL-574	DRIVE SHAFT BEARING SUPPORT
80	NAL-575	DRIVE SHAFT BEARING SPACER

WHEN ORDERING REPAIR PARTS, GIVE MODEL NO., MACHINE NO. & SERIAL NO.
AS WELL AS PART NUMBER AND NAME.

NEW WAY PACKAGING MACHINERY, INC.
P.O. BOX 467 210 BLETNER AVENUE
HANOVER, PA. 17331
TEL. (717) 637-2133 OR 637-8998
FAX. (717) 637-2966 WEB SITE: www.labeler.com