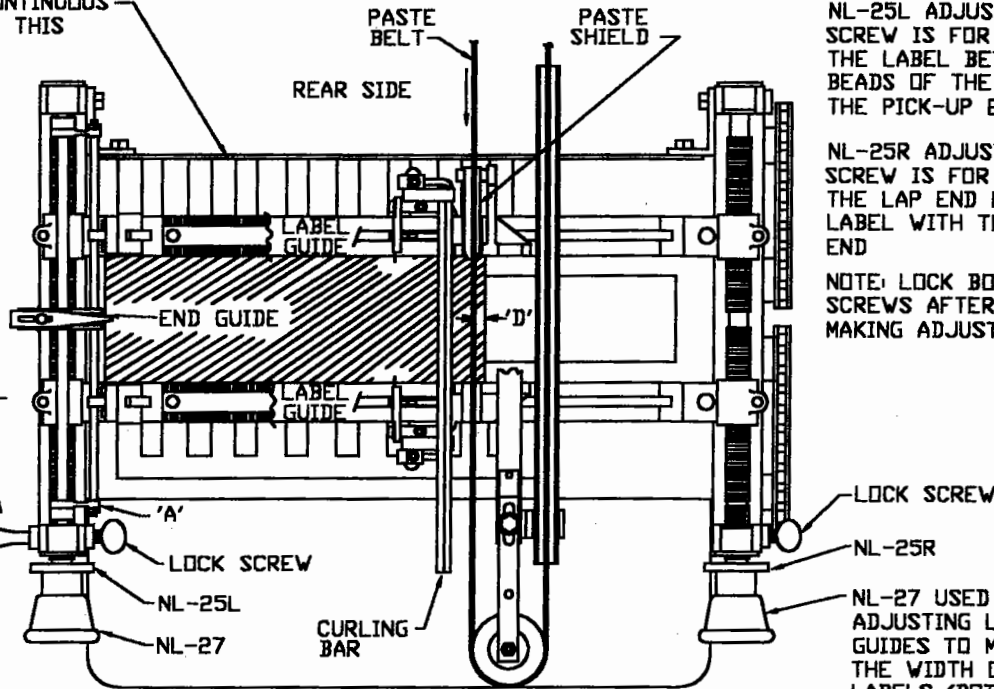


BE SURE TO PUSH CONTINUOUS FEED PLATE AGAINST THIS REAR GUIDE

TO LOWER STANDARD LABEL FEED BED OPERATOR MUST DISENGAGE THE FEED PAWLS BY PUSHING LEVER IN DIRECTION OF ARROW AS FAR AS IT WILL GO. TO ENGAGE IT AGAIN PRESS THE BAR AT 'A'. BEDS EQUIPPED FOR CONTINUOUS FEED CAN USE THE L.H. CLUTCH LEVER



NL-25L ADJUSTING SCREW IS FOR CENTERING THE LABEL BETWEEN THE BEADS OF THE CANS AT THE PICK-UP END

NL-25R ADJUSTING SCREW IS FOR MATCHING THE LAP END OF THE LABEL WITH THE PICK-UP END

NOTE: LOCK BOTH SCREWS AFTER MAKING ADJUSTMENTS

TOP VIEW OPERATOR SIDE

NOTE: CLUTCHES ARE USED ONLY ON MACHINES EQUIPPED WITH CONTINUOUS FEED

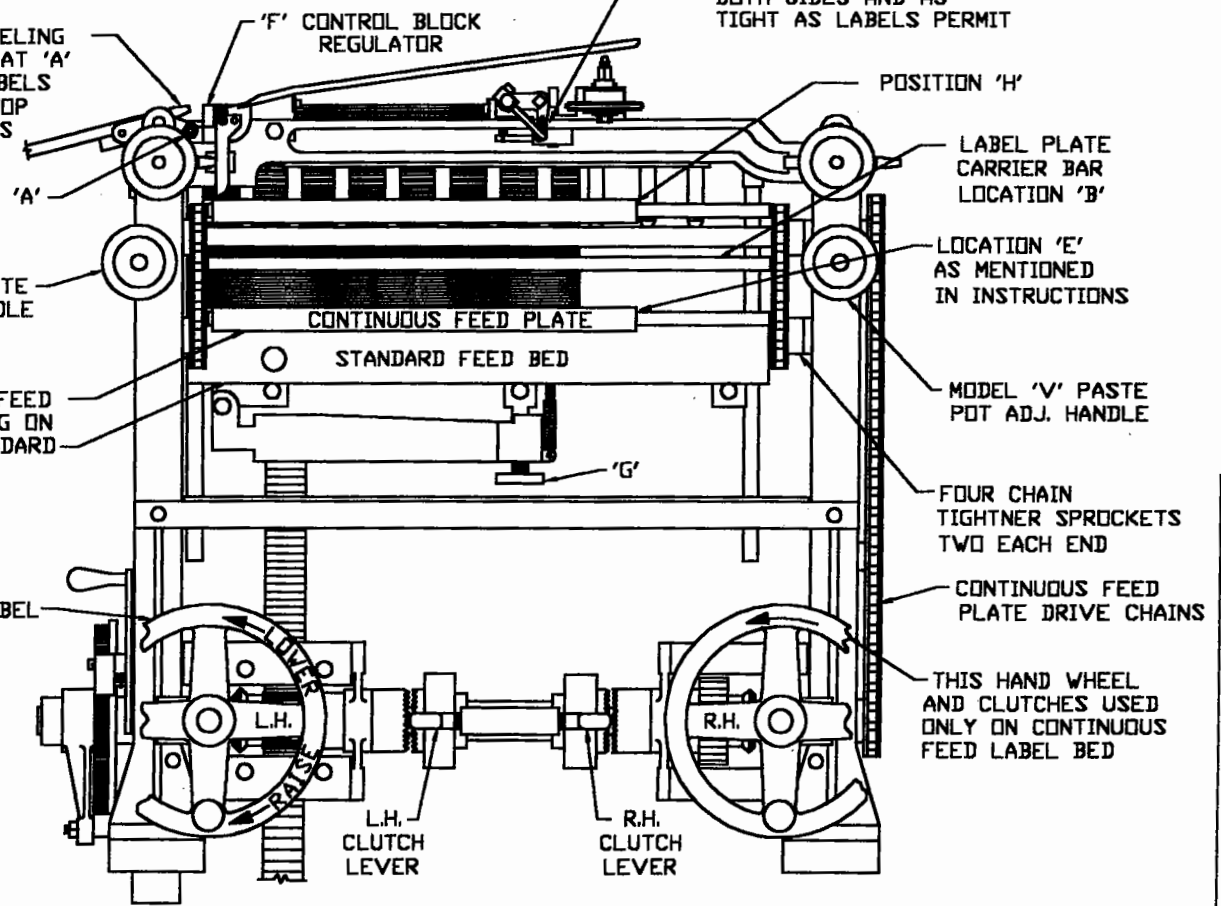
TO START LABELING DEPRESS BAR AT 'A' AND RAISE LABELS FLUSH WITH TOP OF CAN TRACKS

SPRINGS SHOULD BE EVENLY ADJUSTED ON BOTH SIDES AND AS TIGHT AS LABELS PERMIT

MODEL 'E' PASTE POT ADJ. HANDLE

CONTINUOUS FEED PLATE LAYING ON TOP OF STANDARD FEED BED

STANDARD LABEL BED CONTROL HAND WHEEL USED ON ALL LABEL BEDS



POSITION 'H'

LABEL PLATE CARRIER BAR LOCATION 'B'

LOCATION 'E' AS MENTIONED IN INSTRUCTIONS

MODEL 'V' PASTE POT ADJ. HANDLE

FOUR CHAIN TIGHTNER SPROCKETS TWO EACH END

CONTINUOUS FEED PLATE DRIVE CHAINS

THIS HAND WHEEL AND CLUTCHES USED ONLY ON CONTINUOUS FEED LABEL BED

OPERATOR SIDE VIEW

MODEL E LABEL BED OPERATING INSTRUCTIONS WITH OR WITHOUT CONTINUOUS FEED