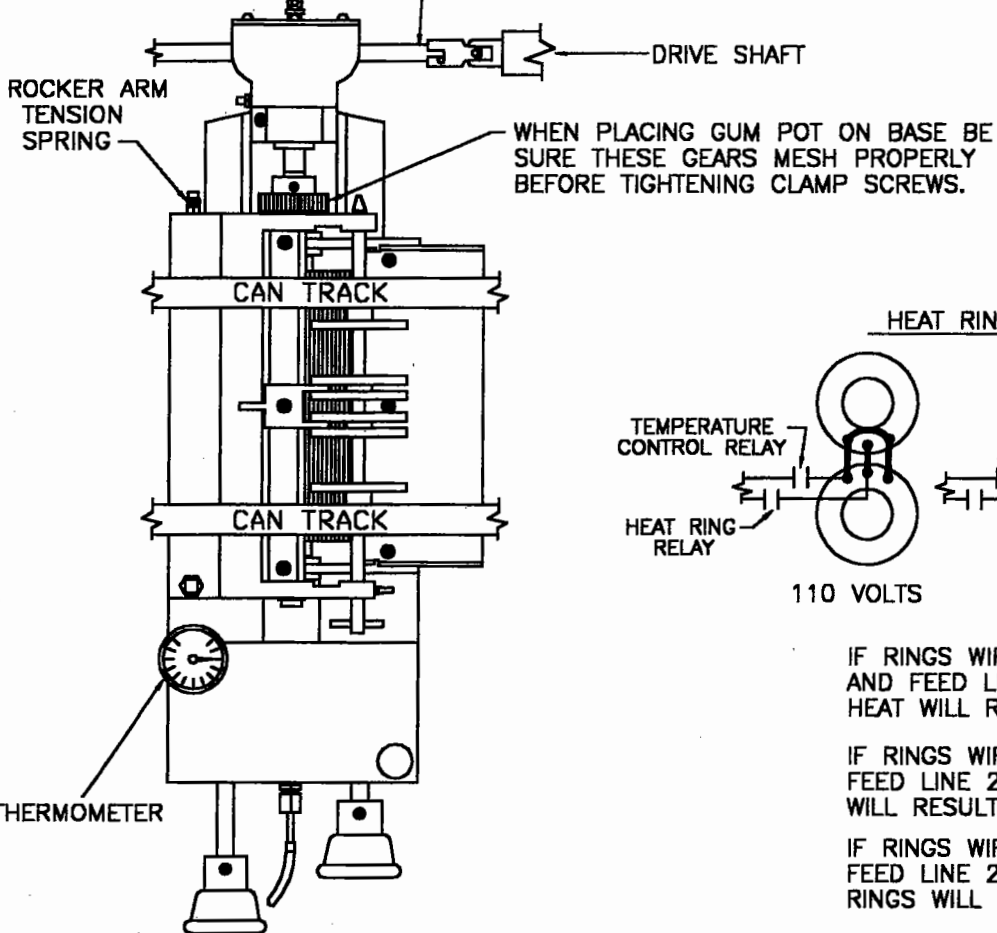
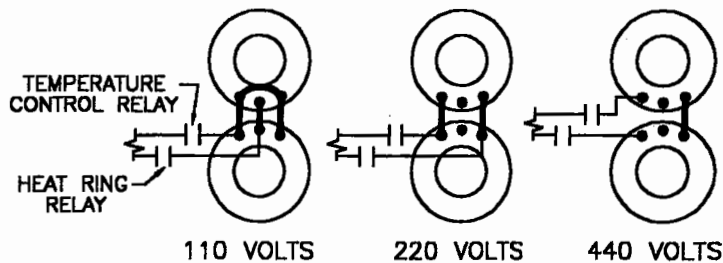


KEEP FILLED WITH
PHILUBE L-2 GREASE
OR EQUIVALENT.

DRIVEN SHAFT, DISCONNECT AFTER EACH DAYS RUN.
BEFORE STARTING, BE SURE GUM IS LIQUID OR
SOFT ENOUGH THAT SHAFT CAN BE TURNED BY
HAND BEFORE CONNECTING AGAIN.



HEAT RING WIRING DIAGRAMS



IF RINGS WIRED 220 OR 440 VOLTS AND FEED LINE 110 VOLTS, HALF HEAT WILL RESULT.

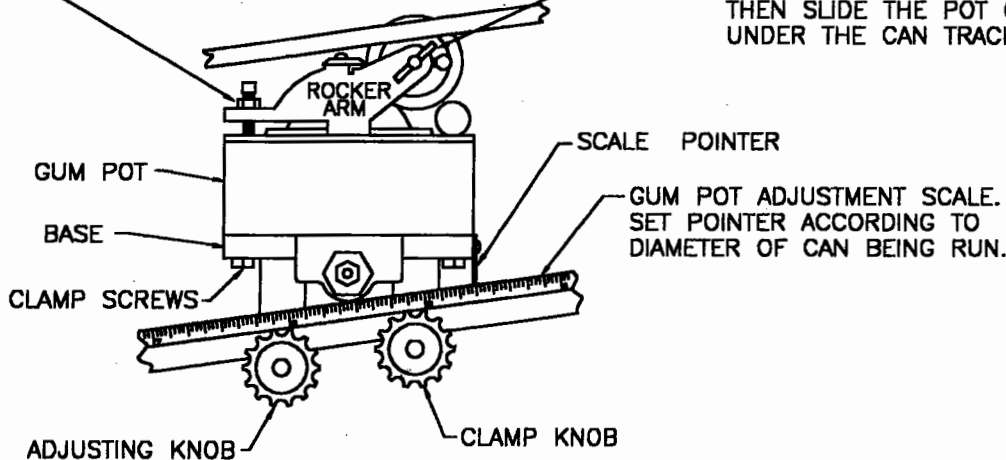
IF RINGS WIRED 440 VOLTS AND FEED LINE 220 VOLTS, HALF HEAT WILL RESULT.

IF RINGS WIRED 110 VOLTS AND FEED LINE 220 OR 440 VOLTS, RINGS WILL BLOW OUT.

IF RINGS WIRED 220 VOLTS AND FEED LINE 440 VOLTS, RINGS WILL BLOW OUT.

ADJUST THIS SCREW UNTIL ROCKER ARM HAS A SLIGHT MOVEMENT AS THE CAN PASSES OVER GUM ROLLS. MORE MOVEMENT IS REQUIRED FOR BADLY PANELLED CANS. AFTER ADJUSTMENT LOCK THE SCREW.

TO REMOVE THE GUM POT FROM THE BASE, FIRST REMOVE THE GUM ROLL SHAFT AND THE GUM ROLLS, THEN SLIDE THE POT OUT FROM UNDER THE CAN TRACKS.



GUM POT GENERAL INSTRUCTIONS